



2025 | ANNUAL CONSUMER CONFIDENCE REPORT (CCR)

# WATER QUALITY REPORT

WSID #1530006



Where Georgia comes together.

## PUBLIC PARTICIPATION OPPORTUNITIES

The Perry City Council meets the first and third Tuesday of each month at 6:00 P.M. at City Hall.

Your participation or comments are welcome at these meetings.

[www.perry-ga.gov](http://www.perry-ga.gov)

## QUESTIONS ABOUT YOUR WATER?

Thank you for allowing us to continue providing your family with clean, quality water this year. If you have any questions about this report or your water utility, please contact Elliott Brighton at (478) 988-2777. We want our valued customers to be informed about their water utility.



## YOUR WATER MEETS ALL FEDERAL AND STATE REGULATIONS FOR WATER QUALITY

### ABOUT YOUR WATER

Last year we conducted more than 15,000 tests for over 78 drinking water contaminants. We only detected nine (9) contaminants with Gross Alpha. This brochure is an overview of the quality of the water we provided last year. Included are details about where your water comes from, what it contains, and how it compares to Environmental Protection Agency (EPA) standards. We are committed to providing you with this information because we want you to be informed. For more information about your water, please contact Water Treatment Manager Elliott Brighton at 478-988-2777.

High quality water is more than the dream of the conservationists, more than a political slogan; high quality water, in the right quantity at the right place at the right time, is essential to health, recreation, and economic growth.

**Citizens of the City of Perry can trust that your water is safe to drink**

### WHERE DOES MY DRINKING WATER COME FROM?

Your water comes from wells which draw from the Cretaceous Sand Aquifer. These wells are protected from potential sources of contamination. Presence of certain constituents does not necessarily indicate that water poses a health risk. Source water assessment information and Wellhead Protection Plan may be obtained from City Hall.



**YOUR WATER IS SAFE TO DRINK!**



## UNDERSTANDING THE DATA

**The table in this report lists all the drinking water contaminants that we detected during the 2025 calendar year unless otherwise noted.**

The presence of these contaminants in the water does not necessarily indicate that the water poses a health risk. Unless otherwise noted, the data presented in this table are from testing completed January 1 through December 31, 2024. The state requires the City to monitor for certain contaminants less than once per year because the concentrations of these contaminants are not expected to vary significantly from year to year. Some of the data, though representative of the water quality, is more than one year old.

### SPECIAL POPULATION ADVISORY

## YOUR HEALTH IS OUR HIGHEST PRIORITY

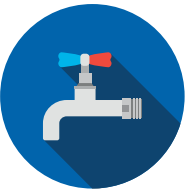
**Some people may be more vulnerable to contaminants in drinking water than the general population.**

Immuno-compromised persons such as persons with cancer undergoing chemotherapy, persons who have undergone organ transplants, people with HIV/AIDS or other immune system disorders, some elderly, and infants can be particularly at risk from infections. These people should seek advice about drinking water from their health care providers. EPA/Center for Disease Control guidelines on how to lessen the risk of infection by *Cryptosporidium* and other microbial contaminants are available from the Safe Drinking Water Hotline.

# HOTLINE

EPA Safe Drinking Water Hotline

**1-800-426-4791**



## WATER QUALITY MONITORING

To ensure that tap water is safe to drink, EPA prescribes regulations that limit the amount of certain contaminants in water provided by public water systems.

**We treat our water according to EPA's regulations.** Food and Drug Administration regulations establish limits for contaminants in bottled water, which must provide the same protection for public health. Providing safe and reliable drinking water is paramount and we are honored to serve the City of Perry with the highest quality water.





# CONTAMINANTS

**THAT MAY BE PRESENT IN SOURCE WATER  
BEFORE WE TREAT AND PROTECT OUR WATER SUPPLY**

**Drinking water, including bottled water, may reasonably be expected to contain at least small amounts of some contaminants. The presence of contaminants does not necessarily indicate that water poses a health risk.**

More information about contaminants and potential health effects can be obtained by calling the EPA's Safe Drinking Water Hotline 800-426-4791.

The sources of drinking water (both tap water and bottled water) include rivers, lakes, streams, ponds, reservoirs, springs, and wells. As water travels over the surface of the land or through the ground, it dissolves naturally occurring minerals, and can pick up substances resulting from the presence of animals or from human activity.



Contaminants that may be present in source water before we treat it include:

- ▶ **Microbial contaminants**, such as viruses and bacteria, which may come from sewage treatment plants, septic systems, agricultural livestock operations, and wildlife.
- ▶ **Inorganic contaminants**, such as salts and metals, which can be naturally-occurring or result from urban stormwater runoff, industrial or domestic wastewater discharges, oil and gas production, mining or farming.
- ▶ **Pesticides & herbicides**, which may come from a variety of sources such as agriculture and residential use.
- ▶ **Radioactive contaminants**, which are naturally occurring.
- ▶ **Organic chemical contaminants**, including synthetic and volatile organic chemicals, which are by-products of industrial processes and petroleum production, and also can come from gas stations, urban stormwater runoff, and septic systems.

**WE'RE HERE  
TO MAKE  
CERTAIN  
YOUR WATER  
IS SAFE TO  
DRINK**

Our Water Treatment Plant Operators are on duty 12 hours a day to ensure your water is safe and provided in adequate supply. All operators are licensed by the State of Georgia and receive continuing education to maintain a high level of proficiency and expertise. A series of tests are performed once a day to ensure consistent quality. These tests include: pH, Fluoride, Iron and Phosphate (corrosion inhibitor) and Chlorine Residual. You can view this report online at [www.perry-ga.gov](http://www.perry-ga.gov) or if you have any questions about your water quality you can visit these other informative sources:

- ▶ [www.epa.gov](http://www.epa.gov)
- ▶ [www.gaepd.org](http://www.gaepd.org)
- ▶ [www.awwa.org](http://www.awwa.org)
- ▶ [www.gawp](http://www.gawp)



# WATER QUALITY DATA

In order to ensure that tap water is safe to drink, the EPA prescribes regulations which limit the amount of contaminants in water provided by public water systems.

**The table below lists all the drinking water contaminants that we detected during the calendar year of this report.**

Although many more contaminants were tested, only those substances listed below were found in your water. All sources of drinking water contain some naturally occurring contaminants. At low

levels, these substances are generally not harmful in our drinking water. Removing all contaminants would be extremely expensive, and in most cases, would not provide increased protection of public health. A few naturally occurring minerals may actually improve the taste of drinking water and have nutritional value at low levels. Unless otherwise noted, the data presented in this table is from testing done in the calendar year of the report. The EPA or the State requires us to monitor for

certain contaminants less than once per year because the concentrations of these contaminants do not vary significantly from year to year, or the system is not considered vulnerable to this type of contamination. As such, some of our data, though representative, may be more than one year old. In this table you will find terms and abbreviations that might not be familiar to you. To help you better understand these terms, we have provided the definitions following the table.

Contaminants	MCLG or MRDLG	MCL, TT, or MRDL	Detect in Your Water	Range		Sample Date	Violation	Typical Source
				Low	High			

**(There is convincing evidence that the addition of a disinfectant is necessary for control of microbial contaminants)**

Chlorine (as Cl <sub>2</sub> ) (ppm)	4	4	1.04	.83	1.24	2025	No	Water additive used to control microbes
--------------------------------------	---	---	------	-----	------	------	----	---

### INORGANIC CONTAMINANTS

Barium (ppm)	2	2	0.0098	0.0098	0.0098	2023	No	Discharge of drilling wastes; Discharge from metal refineries; Erosion of natural deposits
Fluoride (ppm)	4	4	0.83	0.05	1.15	2025	No	Erosion of natural deposits; Water additive which promotes strong teeth; Discharge from fertilizer and aluminum factories

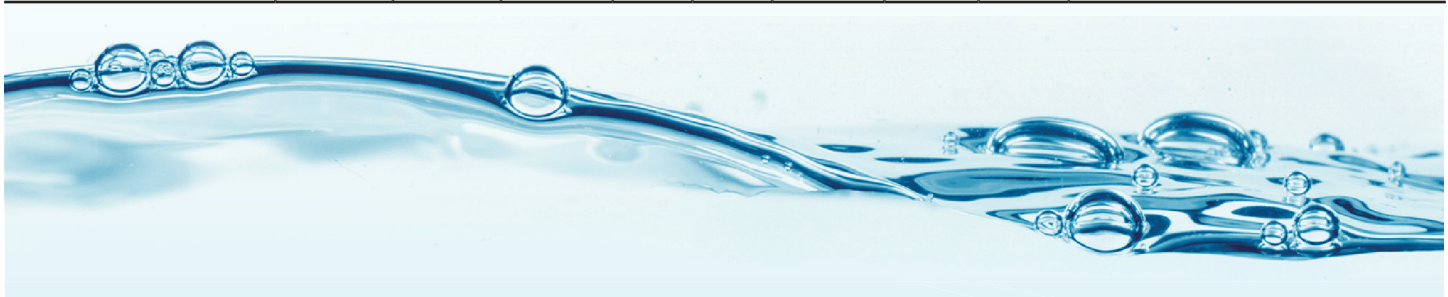
### RADIOACTIVE CONTAMINANTS

Radium (combined 226/228) (pCi/L)	0	5	3.42	0	3.42	2025	No	Erosion of natural deposits
-----------------------------------	---	---	------	---	------	------	----	-----------------------------

Contaminants	MCLG	AL	Detect in Your Water	Range		# Samples Exceeding AL	Sample Date	Exceeds AL	Typical Source
				Low	High				

### INORGANIC CONTAMINANTS

Copper — action level at consumer taps (ppm)	1.3	1.3	0	0	0.01	0	2025	No	Corrosion of household plumbing systems; Erosion of natural deposits
Lead — action level at consumer taps (ppb)	0	15	0.001	0	0.001	0	2025	No	Corrosion of household plumbing systems; Erosion of natural deposits



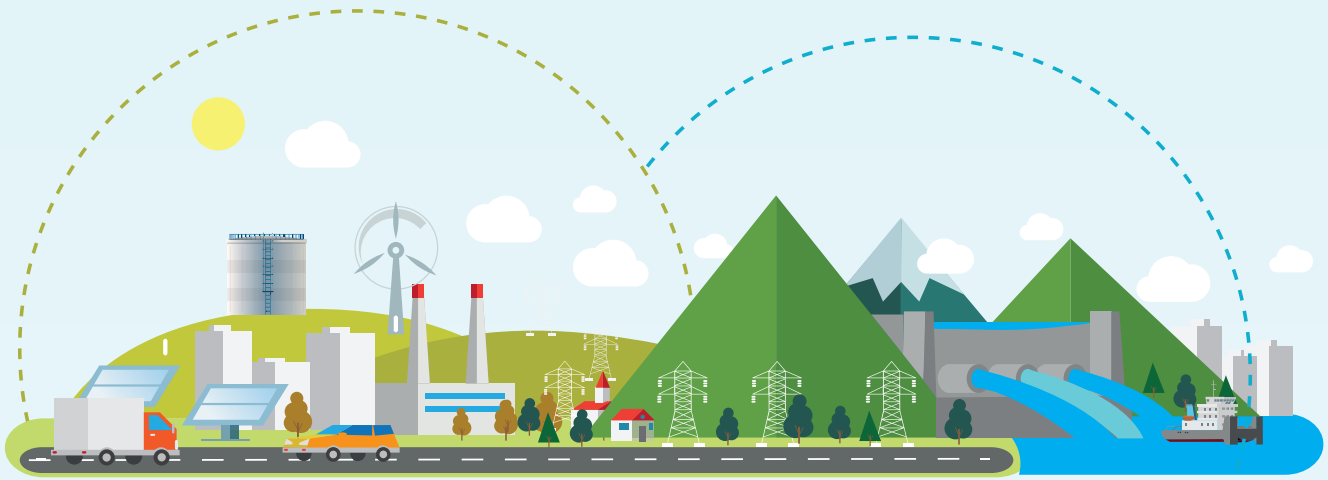
# UNDERSTANDING THE DATA

## TERMS, ABBREVIATIONS AND DEFINITIONS

UNIT DESCRIPTION	
TERM	DEFINITION
ppm	parts per million, or milligrams per liter (mg/L)
ppb	parts per billion, or micrograms per liter (µg/L)
pCi/L	picocuries per liter (a measure of radioactivity)
NA	Not Applicable
ND	Not Detected
NTU	nephelometric turbidity units
MFL	million fibers per liter

### TERMS AND ABBREVIATIONS — IMPORTANT DRINKING WATER DEFINITIONS






Term	Definition
Turbidity	Turbidity has no health affects. However, turbidity can interfere with disinfection and provide a medium for microbial growth. Turbidity may indicate the presence of disease-causing organisms.
Copper	Copper is an essential nutrient, but some people who drink water containing copper in excess of the action level over a relatively short period of time could experience gastrointestinal distress. Some people who drink water containing copper in excess of the action level over many years could suffer liver or kidney damage. People with Wilson's disease should consult their personal doctor.
Fluoride	Some people who drink water containing fluoride in excess of the MCL over many years could get bone disease, including pain and tenderness of the bones. Children may get mottled teeth.
Lead	If present, elevated levels of lead can cause serious health problems, especially for pregnant women and young children. It is possible that lead levels at your home may be higher than at other homes in the community as a result of materials used in your home's plumbing. When water has been sitting for several hours, you can minimize the potential for lead exposure by flushing your tap from 30 seconds to two minutes before using water for cooking or drinking. If you are concerned about elevated lead levels in your home's water, you may wish to have your water tested. Additional information is available from the Safe Drinking Water Hotline (800-426-4791).
MCLG	Maximum Contaminant Level Goal—The level of a contaminant in drinking water below which there is no known or expected risk to health. MCLGs allow for a margin of safety.
MCL	Maximum Contaminant Level—The highest level of a contaminant that is allowed in drinking water. MCLs are set as close to the MCLGs as feasible using the best available treatment technology.
TT	Treatment Technique—A required process intended to reduce the level of a contaminant in drinking water.
AL	Action Level—The concentration of a contaminant which, if exceeded, triggers treatment or other requirements which a water system must follow.
Variances and Exemptions	State or EPA permission not to meet an MCL or a treatment technique under certain conditions.
MRDLG	Maximum Residual Disinfection Level Goal—The level of a drinking water disinfectant below which there is no known or expected risk to health. MRDLGs do not reflect the benefits of the use of disinfectants to control microbial contaminants.
MRDL	Maximum Residual Disinfectant Level—The highest level of a disinfectant allowed in drinking water. There is convincing evidence that addition of a disinfectant is necessary for control of microbial contaminants.
MNR	Monitored Not Regulated
MPL	State Assigned Maximum Permissible Level



# SOURCE WATER PROTECTION TIPS

Protection of drinking water is everyone's responsibility.

**YOU** can help protect our community's drinking water source in several ways:

-  **Eliminate excess use** of lawn and garden fertilizers and pesticides. These products contain hazardous chemicals that can reach your drinking water source.
-  **Pick up** after your pets.
-  If you have your own septic system, **properly maintain your system** to reduce leaching to water sources or consider connecting to a public water system.
-  **Dispose of chemicals** properly; take used motor oil to a recycling center.
-  **Volunteer in your community.** Find a watershed or wellhead protection organization in your community and volunteer to help. If there are no active groups, consider starting one
-  Use EPA's **Adopt Your Watershed** to locate groups in your community, or visit the Watershed Information Network's How to Start a Watershed Team.
-  **Organize a storm drain stenciling project** with your local government or water supplier. Stencil a message next to the street drain reminding people "Dump No Waste—Drains to River" or "Protect Your Water." Produce and distribute a flyer for households to remind residents that storm drains dump directly into your local water body.



**WATER CONSERVATION TIPS**

**DID YOU KNOW?**

Luckily, there are many low-cost and no-cost ways to conserve water. Small changes can make a big difference—try one today and soon it will become second nature.

- ▶ Take short showers—a 5-minute shower uses 4 to 5 gallons of water compared to up to 50 gallons for a bath.
- ▶ Shut off water while brushing your teeth, washing your hair and shaving and save up to 500 gallons a month.
- ▶ Use a water-efficient showerhead. They are inexpensive, easy to install, and can save you up to 750 gallons a month.
- ▶ Run your clothes washer and dishwasher only when they are full. You can save up to 1,000 gallons a month.
- ▶ Water plants only when necessary.
- ▶ Fix leaky toilets and faucets. Faucet washers are inexpensive and take only a few minutes to replace. To check your toilet for a leak, place a few drops of food coloring in the tank and wait. If it seeps into the toilet bowl without flushing, you have a leak. Fixing it or replacing it with a new, more efficient model can save up to 1,000 gallons a month.
- ▶ Adjust sprinklers so only your lawn is watered. Apply water only as fast as the soil can absorb it and during the cooler parts of the day to reduce evaporation.
- ▶ Teach your kids about water conservation to ensure a future generation that uses water wisely. Make it a family effort to reduce next month's water bill!

# LEAD AND COPPER MONITORING

**Lead can cause serious health effects in people of all ages, especially pregnant people, infants (both formula-fed and breastfed), and young children. Lead in drinking water is primarily from materials and parts used in service lines and in home plumbing.** The City of Perry is responsible for providing high quality drinking water and removing lead pipes but cannot control the variety of materials used in the plumbing in your home. Because lead levels may vary over time, lead exposure is possible even when your tap sampling results do not detect lead at one point in time.

You can help protect yourself and your family by identifying and removing lead materials within your home plumbing and taking steps to reduce your family's risk. Using a filter, certified by an American National Standards Institute accredited certifier to reduce lead, is effective in reducing lead exposures. Follow the instructions provided with the filter to ensure the filter is used properly. Use only cold water for drinking, cooking, and making baby formula. Boiling water does not remove lead from water. Before using tap water for drinking, cooking, or making baby formula, flush your pipes for several minutes. You can do this by running your tap, taking a shower, doing laundry or a load of dishes. If you have a lead service line or galvanized requiring replacement service line, you may need to flush your pipes for a longer period. If you are concerned about lead in your water and wish to have your water tested, contact the City of Perry Water Department at 478-988-2777. Information on lead in drinking water, testing methods, and steps you can take to minimize exposure is available at <https://www.epa.gov/safewater/lead>.

LEAD SERVICE LINE (LSL) INVENTORY	WSID #1530006
Connections	17,098
Lead	0
Non-Lead	15,273
Galvanized	1,692
Unknown	133

**▶ ALL LSL INVENTORY DATA CAN BE FOUND WITH CUSTOMER SERVICE IN THE ADMINISTRATION BUILDING**



# CONSUMER CONFIDENCE REPORT (CCR)

Water utilities across the United States are required by the Environmental Protection Agency (EPA) to provide its customers with an annual Consumer Confidence Report (CCR).

In 1996, Congress amended the Safe Drinking Water Act (SDWA) by adding a provision requiring all community water systems to deliver to their customers an annual water quality report which contains information on the water system's source water, levels of any detected contaminants, compliance with drinking water rules and other educational information.

**In 2025, the City of Perry met ALL state and federal regulations for water quality.**

We are honored to serve the City of Perry—and are happy to answer any questions regarding this report or your water utility. Give us a call if we can help.

**Elliott Brighton**  
**ESG Operations/An Inframark Company**  
(478) 988-2777



THIS ANNUAL REPORT  
WAS PREPARED BY INFRAMARK, LLC

Proudly serving the City of Perry, Georgia

[www.inframark.com](http://www.inframark.com)